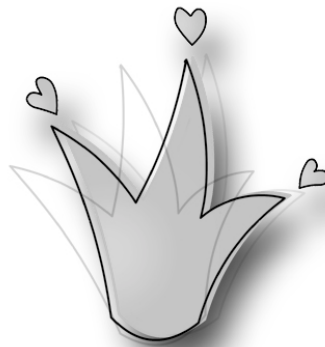




PO Box 6090
Cairns Qld 4870
Ph: 07-4050 9444
Fx: 07-4050 9440
www.jute.com.au
info@jute.com.au

Just Us Theatre Ensemble



JUTE

the evocative voice of the north

Annual Report

2003

CONTENTS

REPORTS	3
MISSION	4
COMPANY OPERATIONS 2003	5
ORGANISATIONAL CHART	6
LIST YOUR KEY PERSONNEL AND DESCRIBE THEIR ROLES	6
LIST YOUR BOARD MEMBERS AND THEIR ROLES	7
SERVICE DELIVERY REPUTATION	7
HIGHLIGHTS 2003	9
DEVELOPMENT OF CENTRE OF CONTEMPORARY ARTS	9
INDUSTRY REPRESENTATION	9
AWARD	9
SHARED RESOURCES	9
AUDIENCE DEVELOPMENT	9
JUTE PLAYWRIGHTS' CONFERENCE	9
NEW PARTNERSHIPS DEVELOPED	10
ENTER STAGE WRITE	10
CREATIVE PROGRAM JANUARY - DECEMBER 2003	11
KEY OUTCOMES	11
MEASURES OF SUCCESS	11
THE PRODUCTIONS	12
DEVELOPMENT PROGRAMS	12
STRATEGIC PROGRAM	12
DETAILED ARTISTIC REPORTS	13
WORKSHOP 2003 SERIES	13
2003 ESW PROGRAM	14
JUTE PLAYWRIGHTS' CONFERENCE – 2003	15
SUCCESS STORIES FROM ENTER STAGE WRITE & JUTE PLAYWRIGHTS' CONFERENCE	16
2001 - 2003	16
QUEENSLAND THEATRE COMPANY/JUTE PARTNERSHIP 2003	17
LATITUDES BY KATHRYN ASH, MARK GAAL & MICHAEL GOW 2003	17
SUNDAY IN THE CITY – PLAY READINGS 2003	19
SUPPORTERS	20

REPORTS

Chair's Report


"JUTE continues to astound me. The scope of work and the quality of work achieved by so few people on such a shoestring budget over such an extended period of time is testament to the company stamina. This feat of excellence under duress is the result of the good management, faith, vision and lateral thinking of our most important resource; our personnel and our Board of Directors.

Although it is commendable to be Art Heroes who push through the financial challenges, producing theatre that is every bit as startling and wonderful as is produced by companies with far higher levels of funding support, I am ever mindful of the stress this kind of dedication forces on our people. Stress and workload burnout is the company's greatest enemy. Without the people, there would be no vision. Without the vision, JUTE would not be here.

It has been a year for looking back and looking forward.

In November 2002, the company celebrated its 10th year of operation. Taking stock of the distance JUTE has come in its first decade was a pleasure as much as an instruction. We have achieved so very much, and yet there is also the realisation that we must constantly move forward. Never in the eleven years of JUTE's life have I had the impression the company was moving backwards or even idling. Changing and taking risks have brought us all to this incredible point of success and the lesson here is that we should never stop making those changes and taking those risks.

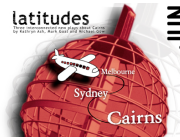
Of course, it is the future that has also occupied our thoughts as the company races toward the realisation of its own theatre and home, housed within CoCA. Design decisions, large and small, various engineering challenges, difficult deadlines and nail-biting tension over financial considerations have coloured the majority of the year. However, challenges have never phased the company, and the delivery of a significant cultural facility and a brilliant inaugural season of new works to the Cairns community in 2004 will confirm JUTE as a significant force in Australian theatre.

 Kathryn Ash
Chair

Artistic Director's Report

2003 saw a transition from creative programming to building project development. 2002 was a year of celebration of 10 successful years of operation and significant creative

achievements. In 2003 the focus shifted to the development of strategies, policies and practical operational issues of managing a theatre and new cultural infrastructure as well as design, financial planning and building of the new Centre of Contemporary Arts. The development of a significant inaugural season of plays and events for CoCA in 2004 has been an important component of the planning taking place in 2003. However, a theatre company is not a theatre company without creative programs and JUTE committed to maintaining a small but important program in 2003.



The most significant development for JUTE in 2003, apart from CoCA, is the increase in profile in our regional community and in the Australian theatre industry. The regional recognition is driven by the Audience Development Project (funded through Arts Queensland's Major Grants), and the Regional Theatre Communities Initiative (funded through Australia Council Theatre Board). These projects have provided long overdue resources to enable JUTE to develop strategic long-term relationships with regional and remote communities in Far North Queensland. The development of the very successful Volunteer Incentive Program has generated a loyal, informed core of supporters who link JUTE to a range of community sectors.

The industry recognition has come about primarily through the JUTE Playwrights' Conference, which brings key theatre practitioners from throughout Australia to Cairns where JUTE's contribution to the development of new works for Australian theatre has become highly regarded. Numerous partnerships with a range of companies from Brisbane to Northern Territory to Tasmania to regional Queensland have been developed and nurtured and are now beginning to bear creative fruit.

JUTE is about to step into the dream of our own home that the founding members dreamed almost 11 years ago. The realisation of the dream is no accident - it is due to the tireless dedication, hard work and vision of passionate individuals to create a dynamic regional theatre industry to enrich the lives of our community. JUTE is more than happy to take up the challenge!

Suellen Maunder, Artistic Director

MISSION

JUTE is an award winning Regional Theatre Company

driven to contribute to the wealth and diversity of contemporary Australian Theatre through the development and production of new works providing resources, opportunities and recognition for the wealth of work being created in the regions particularly Far North Queensland.

"JUTE is surely almost unique in having moved in ten years to a point of considerable professionalism and social relevance, and in having impressed those in southern capitals with the special value that is possible in regional contemporary theatre."

Desley Boyle, Member for Cairns (2002)

COMPANY OPERATIONS 2003

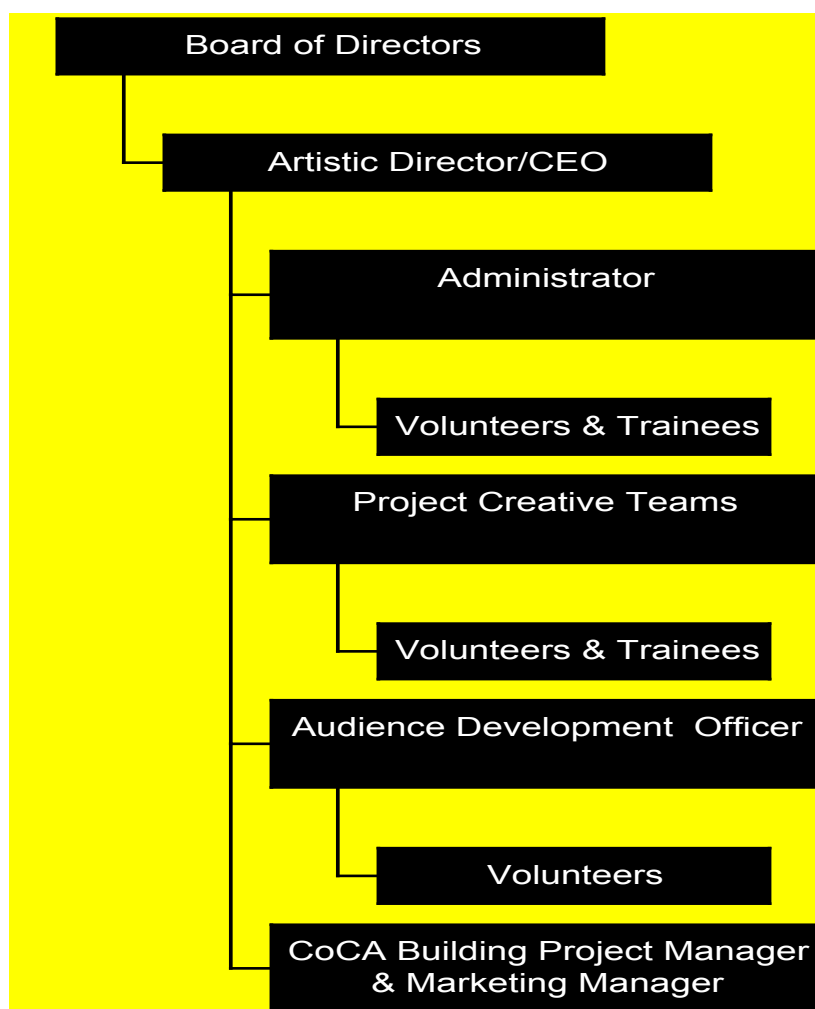
JUTE has always had a clear purpose, a tremendous amount of drive, a 'can-do' attitude and a strategic approach to the development of a significant regional theatre industry. JUTE provides considerable access to the performing arts for the regional and remote communities of the Far North. JUTE's philosophy demands creative excellence, diversity of voices; access to artistic development and collaboration and partnerships with the broader Australian theatre industry.

"This company has a most prestigious arts development history and all achieved in the wilds of Far North Queensland. From an extraordinary track record of innovative Australian script development, with particular reference to regionally located writers, to co-presentations with the Queensland Theatre Company and ongoing work with La Boite Theatre, to employment and professional opportunities for regionally located theatre practitioners, JUTE keeps broadening the boundaries of the true meaning of cultural development."

Jane Atkins, Associate Director, Queensland Arts Council

Together with its industry partners, JUTE provides a broad range of cultural services to the regional and remote areas of Far North Queensland. JUTE offers an excellent investment opportunity for Local, State and Federal bodies to deliver their cultural policy outcomes.

ORGANISATIONAL CHART



List your Key personnel and describe their roles

Suellen Maunder	Artistic Director
Janet Parfenovics	Building Development Manager and Marketing Manager – position changed to CoCA CEO.
Amy Losiak	Administrator
Andrea Berchtold	Audience Development Officer
Julie Duncan	Finance Director, CoCA
Stephen Carleton, Anne Harris, Gail Evans & Kathryn Ash	Playwrights –North Myth Project development (funded by Northern Territory Arts)
Dianna Nixon	Artist-in-Residence – Voice Professional Development

Susan Prince	CCD Worker and Workshop Facilitator
Geddy Aniksdal, Greenland Frieteater Gilly Adams	Magdalena Festival Performing Words – Workshop Facilitators
Mark Gaal	Director – Latitudes
Lucie Willink	Designer – Latitudes
Michael Gow, Mark Gaal & Kathryn Ash	Playwrights – Latitudes
Sue Rider, Ian Brown, Kathryn Ash & Sean Mee	Dramaturges-In-Residence, Enter Stage Write Program

List your Board members and their roles

Kathryn Ash	Chair
Jan Aird	Vice chair
David Rivett	Company Secretary
Patricia Gatto	Finance Director
Donna Maree O'Connor	Ordinary Director
Andrew Kennedy	Ordinary Director (Resigned)
Suellen Maunder	Ordinary Director

Rank the groups of people who will specifically benefit from your program from 1 to 3.

- Regional Queenslanders
- Women
- Youth

Service Delivery Reputation

In over 11 years of operation, JUTE has broadened the definition of regional arts, breaking down the regional cultural cringe both from inside and outside the regional community. Almost 30 new playwrights have been developed over the last 5 years and emerging artists nurtured through JUTE are now returning to Cairns after undertaking further institutional theatre studies. The Australian theatre industry is now very aware of the small but dynamic company in Far North Queensland who are creating a new voice for Australian theatre. JUTE's professional networks and partnerships stretch from Darwin to Tasmania and our community development programs stretch from Cape York to Gulf Savannah to the Atherton Tablelands. Three JUTE projects appeared in the State Government's "Creative Government" document and JUTE is featured in a recent Australia Council publication highlighting dynamic Queensland artists and organisations. JUTE is recognised as one of the major regional theatre companies in Australia. JUTE provides significant access to remote communities and has substantial training and development programs in place.

“JUTE have clearly proven themselves. The greatest challenge facing JUTE is not inspiration, expertise or energy, but the funding to continue their work and build on their achievements over the last 10 years.”

Phil Finkelstein, Manager, Cairns Civic Theatre

“JUTE is a dynamic and enduring part of the Queensland theatre sector. The company has had considerable success in the Far North Queensland region, as well as playing a significant role throughout Queensland. JUTE’s 2004 season, in which four new Queensland works developed by the company will be premiered in the new Centre of Contemporary Arts in Cairns, is testament to their commitment and ability to generate new works and develop key creative personnel. JUTE have earned and continue to maintain the respect and confidence of Queensland’s professional theatre community.”

Ian Brown, Executive Director, Playlab

“Alone in creating professional theatre in the region, JUTE is pioneering original and innovative work. The ESW program is an excellent initiative, recognising the need for long-term investment in playwrights, not simply for the development of new repertoire, but, significantly, for the encouragement and nurturing of the regional voice as a valuable contributor to our Australian national identity.”

Sue Rider, Award winning writer, director and dramaturg

I am not sure what I expected when I first landed in Cairns. All of us interstate delegates were taken aback at the construction of the terrific new facilities and were very optimistic about the possibilities of new work generated up north. There are some fine theatre artists at work both within, and attached to, JUTE and I wish them every success with their various infrastructure projects and with their very important Conference - important as a way of bringing local artists in touch with theatre professional across the country, and for introducing the visiting delegates to the scope and vision of far north Queensland’s local theatre workers. This kind of work is crucial in a country as diverse and enormous as ours and I look forward to the continued success of JUTE’s efforts.

Chris Mead, Director, ANPC

HIGHLIGHTS 2003

Development of Centre of Contemporary Arts

Undertook feasibility studies to identify appropriate site for the centre, assess its feasibility and construct an appropriate business plan for the operations of the Centre. Site was confirmed in December 2002. Building design & development and business & procedural planning for CoCA continued throughout 2003.

Set up CoCA company and secured Keith DeLacy (ex-Qld Treasurer) as Chair

CoCA Vision Statement

CoCA will be an adventure. A celebration of innovation, creativity and diversity, valuing artistic integrity and excellence, programming a range of contemporary arts events in regional Queensland.

Industry Representation

Ministerial Re-appointment of Artistic Director – Suellen Maunder to Board of Trustees of Queensland Performing Arts Centre (Brisbane)

Award

Awarded the Queensland Writers Centre 'The Johnno' award "in recognition of JUTE's outstanding contribution to writers and writing".

Shared Resources

JUTE/Kick Arts – Shared office accommodation and Marketing and Product & Building Development Manager – Janet Parfenovics.

Audience Development

12 month project (Feb 03 - Feb 04) undertaken to develop relationships, projects and long term development strategies with school and community cultural performance groups. The project culminated in an Audience Development Strategy which will be implemented throughout 2004 and onwards. This document is an extremely valuable resource and will be made available for other regional companies and appropriate arts organisations as a model audience development in the regions.

JUTE Playwrights' Conference

3rd Annual Playwrights' conference attended by an extraordinary range of key practitioners from the Australian Theatre Industry and confirmed JUTE's place in the Australian Theatre Industry.

The range of writing was as diverse as it was specific, as thrilling as it was occasionally frustrating, and the only real problem was that there was not more time. Overall I thought you ran a very tight ship, have a terrific team up there and that it was a festival marked by political restlessness, generosity of spirit and a real desire to make the most out of this vibrant art form."

Chris Mead, Artistic Director, Australian National Playwrights Conference

New Partnerships Developed

Development of new work with Knock-Em-Down Theatre, Darwin, with co-production in 2004
Collaboration with Metro Arts Brisbane to develop alternative regional touring grid
Co-Production with Queensland Performing Arts Centre (QPAC) in 2004
Planned collaboration with Australian Script Centre for 2004 writing program

Enter Stage Write

Programmed four (4) new works from Enter Stage Write program for production in the inaugural year of the JUTE Theatre in CoCA.

Key Outcomes

- Development and production of new Australian, particularly regional theatre works
- Employment and skills development for regional theatre practitioners
- Community cultural development through skills development and community performance events
- Corporate communication programs
- Audience development through Co-productions/collaborations; membership and volunteer incentive programs

Measures of Success

- Number of new works developed & produced
- Number of regional practitioners employed
- Skills development programs delivered
- Level of involvement of young people
- Level of engagement with diverse community sectors
- Financial Corporate program targets met
- Audience target numbers

The Productions

Latitudes by Kathryn Ash, Mark Gaal & Michael Gow

Sunday in the City – Play Reading Program

Development Programs

Professional Development – Voice – 2 week residency for professional & emerging practitioners

Theatre Workshops Series - General Public skills workshops

Enter Stage Write 2003 - Regional Playwrights Development Program

2003 JUTE Playwrights' Conference – 3rd year

Queensland Theatre Company 2003 - Regional Partnership Program

Strategic Program

Audience Development Strategy 2004 – 2006 - Strategy document attached.

Detailed Artistic Reports

General Overview: During 2003, JUTE was occupied with the building development of the new Centre of Contemporary Arts. The \$2.7m capital works program required significant resources, particularly the time and energies of the staff of JUTE and KickArts. The development requirements were not only confined to the design of the building and the spaces within it, but also extended to setting up the new CoCA Company. This required recruiting a new board for CoCA, development of a constitution and business plan etc. A number of procedures and policies also needed to be developed for JUTE, KickArts and CoCA to work together in the new centre. With the new theatre, policies were required to cover the new business of venue hire and the development and planning of a greatly increased creative program to fill the new centre.

Due to these requirements, programs, which usually require a consistent focus and resources, were reduced in order to meet the needs of the building program.

Workshop 2003 Series



Theatre Workshop Series 2003

Tutors:	Susan Prince & Jack Heywood (2003)
Funding:	Self Funded
Dates:	8-week terms; 1 Term in 2003

Only one workshop term was undertaken in 2003. This is one of the programs which takes consistent company resources to ensure places are filled. The lack of consistent available space suitable for workshops also contributed to the program being abandoned for 2003.

2003 ESW Program



– Playwright Development Program

Project Mgmt: JUTE
 Partners: Queensland Theatre Company Regional Partnerships Program, Playlab Inc and La Boite Theatre & Magdalena Festival, Brisbane.
 Dates: April - September 2003
 Funded by: Cairns City Council – Regional Arts Development Fund (RADF)
 Australia Council Literature Board – Young & Emerging Writers Initiative

Enter Stage Write is a three year initiative 2001 - 2003, to develop playwrights living in the Far North Queensland region. The project relies strongly on the partnerships with QTC and Playlab and in 2003 La Boite Theatre became part of the program. The program has been extremely successful, placing Cairns on the map in terms of writing for stage. Four of the works generated through this program will form the inaugural season of plays at the new Centre of Contemporary Arts in 2004. Two co-productions will take place in 2004 (Queensland Performing Arts Centre (QPAC), Brisbane and Knock-em-Down Theatre, Darwin) which will bring these works to a wider audience.

Based on feedback from dramaturges-in-residence and ESW writers, the 2003 program was refined to work as a pathway from skills development to script development to production. From introducing people to the skills required for writing for performance to getting the script ready for production. The program comprised three streams:

Open Stream: Beginners, introducing new writers to writing for performance
 Development Stream: Draft new full length plays for development
 Production Stream: Mature scripts moving towards production

Enter Stage Write Playwrights developed & presented at Playwrights Conference

<u>Open Stream:</u>	<u>Development Stream:</u>	<u>Production Stream</u>
Angela Murphy	Linda Roberts	Lisa McClymont
Melanie Brierley	Marie Pezet	Toni Allayialis
Lesley Moseley*	Philip Witts	
Helen Low	Susan Prince	
<i>Young & Emerging</i>	John Lipscomb	
Sara Isherwood		
Christian Green*		

Shannon Jensen		
----------------	--	--

*Lesley Moseley left the program in August due to personal circumstances beyond her control.

*Christian Green did not complete the Young and Emerging program

Residencies:

Dates	Practitioners	Partnership
April 1 - 4	Geddy Aniksdal & Gilly Adams	Magdalena Festival, Cairns City Council, Cairns Civic Theatre & Playlab Inc.
July 7 - 12	Ian Brown	Playlab Inc
July 28 - Aug 1	Sean Mee	La Boite
Aug 11 - Sep 6	Sue Rider	Queensland Theatre Company & RADF (Actors component)
Jul 8 - Sep 30	Kathryn Ash	Aust Co Lit Fund Young Writers Initiative
Sep 12th	Grant writing Workshop (Kathryn Ash and Suellen Maunder)	Nil

JUTE Playwrights' Conference – 2003



September	19 - 21
Producer:	JUTE, Official event of Festival Cairns
Funded by:	Australia Council Literature Fund

The discussions throughout the conference had a regional focus with considerable national perspective. The quality of the conference, in terms of delegates attending, discussions about development practices for new Australian writing, discussions between producers and writers and the overall planning of the program moved the conference to a new level. In 2004 it is proposed to invite a range of regional company directors (Qld, NT & Tas) to take part in the discussions about 'writing from the edge' this creating opportunities for sharing of resources, collaborations and co-productions within regional Qld and cross-state.

Play Readings: 11 new works developed through Enter Stage Write program and presented at conference

Open Stream	Development Stream	Young & Emerging
Road to Omega by Helen Low	Break on Through by Susan Prince	Vanishings by Shannon Jensen
A Work on Progress by Melanie Brierley	Impossible Dream by Philip Witts	A Big Clown in a Small Town by Sara Isherwood

Teacher Trauma by Angela Murphy	Silence by John Lipscomb	
	Suzannah by Marie Pezet	
	Grace by Linda Roberts	
	Smashed Eggs and Olive Oil by Lisa McClymont	

Workshops: 4 Workshops given at conference
 Panel Speeches: 3 x Key Note Panelists
11 x Panelists

Conference Key Industry participants (Alphabetical order)

Kathryn Ash, Writer, Dramaturg
 Michael Beresford, Writer, Director, Drama Lecturer, JCU
 Ian Brown, Director, Playlab Inc
 Stephen Carleton, Director, Knock-Em-Down Theatre, Darwin
 Gail Evans, Director, Knock-Em-Down Theatre, Darwin
 Chris Gallagher, Director, Australian Script Centre, Tasmania
 Michael Gow, Artistic Director, Queensland Theatre Company
 John Kotzas, Artistic Director, Queensland Performing Arts Centre
 Peter Matheson, Australia's leading dramaturg
 Sean Mee, Artistic Director, La Boite Theatre
 Chris Mead, Director/Curator, Australian National Playwrights Conference
 Sue Rider, Writer, Dramaturg, Director, Actor
 Stephen Sewell, Writer for Theatre and Film
 Jim Sharman, Internationally acclaimed Director

**Success Stories from Enter Stage Write & JUTE Playwrights' Conference
 2001 - 2003**

- JUTE received the 2003 Queensland Writers Centre Award, 'The Johnno' in recognition of JUTE's outstanding contribution to writers and writing.
- JUTE, a small regional company has been placed on the map for the development of new Australian work.
- A number of writers in the ESW program now express confidence in applying for writing opportunities and 2 of our writers were the only women to be shortlisted for QTC's The Works Program - in 2002
- FOUR new works developed through the ESW program and read at previous conferences will be produced by JUTE in the inaugural 2004 season at the new JUTE Theatre in the Centre of Contemporary Arts.
- Two of the new works for the 2004 season are co-productions, one with Queensland Performing Arts Centre (QPAC) and the other with Knock-Em-Down Theatre, Darwin.
- Seasons of these co-productions will also take place in the Cremorne Theatre – Brisbane as part of the Brisbane Festival and in Darwin (and potentially the Alice Springs Festival).
- All four new works in 2004 will be published through Playlab Press.
- Flutter by Kathryn Ash was initially developed through ESW and received the Banff Residency award in 2003.
- One of the writers was commissioned by Playworks to develop a piece for presentation at the ANPC in 2003

- Two of the new works from the 2003 ESW program are being programmed for JUTE's 2005 season
- QTC and JUTE will work towards developing a series of short works in 2004 for co-production in 2005, inspired by one of the readings presented at the 2003 conference.
- One of the new works developed through ESW was shortlisted for the ANPC conference
- One of the works developed through ESW is now receiving another production in Melbourne in 2004 and possibly in Tasmania.
- JUTE is collaborating with the Australian Script Centre in 2004 to develop a crossover from writers working 'on the edges' of Australia, which could lead to future potential Far North Queensland - Tasmania co-productions.
- Developing an alternative regional touring circuit for regionally developed work.

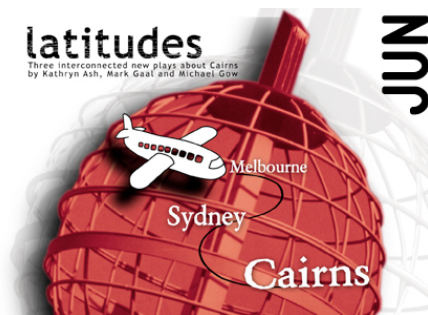
Queensland Theatre Company/JUTE Partnership 2003

Program: QTC Regional Partnerships Program
 Dates: 3-Year Strategy 2001 - 2003

The strategy continued during 2003. During this time, QTC engaged a trainee regional dramaturg to work with the Enter Stage Write Program as well as a four-week residency by Sue Rider. QTC also provided a 2-week residency by Diana Nixon in voice for actors.

This program is invaluable to JUTE. It has given a regional company access to more than the obvious resources allocated to the different programs. It offers ongoing mentorship opportunities for the Artistic Director both in a creative and operational sense. It gives JUTE more kudos within the local community through its connection with QTC and it has provided us with another pathway into the Australian theatre industry.

Latitudes by Kathryn Ash, Mark Gaal & Michael Gow 2003



11 - 14 June 2003
 Producer: JUTE
 Director: Mark Gaal
 Season: 11 – 14 June 2003

Venue: Cairns Civic Theatre
Funding: Production - Australia Council, Theatre Fund, Key Organisations

Creatives		Cast	Suellen Maunder
Director	Mark Gaal		Susan Prince
Designer	Lucie Willink		Kathryn Ash
Light Design	Jonathan Driver		
Sound Design & Composer	Shakimra		

“Latitudes” is a new work written by three award-winning Australian writers, Kathryn Ash, a Cairns based playwright, Mark Gaal from Sydney and Michael Gow who lives and works in Brisbane.

Directed by Mark Gaal, “Latitudes” brought together three interlaced stories about Cairns and has been described as a “kaleidoscopic fusion of laughter and tears, frustration and celebration”. This play brings to the stage a lifestyle in Cairns as seen through the eyes of three quite different women.

The three short works were commissioned to celebrate the 10th anniversary of JUTE and were written specifically for the three founding members, Kathryn Ash, Susan Prince and Suellen Maunder. Under the direction of Mark Gaal the pieces worked together extremely well and thrilled the audience and the critics.

“Latitudes was a delight from beginning to end. I, for one, hope it. Or a version of it, comes back to the new Centre of Contemporary Arts (CoCA) when it opens next year.”

Denis Walls, Barfly, 19 June 03

“Latitudes provides a night of entertaining, contrasting characters, ideas and emotions with an emphasis on comedy”

Jan Lahney, Cairns Post, 13 June 03

“JUTE has travelled a long road from humble beginnings. Latitudes, with its humour, pace and energy, is a fitting celebration production”

Ken Cotterill, Arts Nexus No. 51 July - September 03



Sunday in the City - Play Readings 2003

2 nd Sunday of the Month, Mar - Nov	
Producer:	JUTE
Director:	Various
Venue:	Cairns Civic Theatre, Cairns Regional Gallery, Cairns City Library
Funding:	Nil

“Sunday in the City” is a unique collaboration between JUTE, Cairns Civic Theatre, Cairns Regional Gallery and the Library with the aim of animating the City centre on the second Sunday of the month from March to November. JUTE presented a series of free play readings from classic texts to contemporary extant scripts to new works under development through the Enter Stage Write (ESW) program. Not only did these readings give the ESW writers an opportunity to hear a range of works read by professional actors but it gave the Cairns audience access to a range of works which would not otherwise be accessible. The discussions following the readings also proved an important component in the development of a well-informed audience. The readings were stages in the foyer of the Civic Theatre, within the gallery spaces and the education room of the Cairns Regional Gallery and in the meeting room at the Cairns City Library.

Month	Play	Director	Type	Venue	Aud.
March	Kafka Dancers by Timothy Daly	Suellen Maunder	Australian Contemporary	Cairns Civic Theatre	45
April	The Stiff by Sven Swenson	Jack Heywood	Queensland Contemporary	Cairns Civic Theatre	85
May	Mother Courage and her Children by Bertold Brecht	Mark Gaal	Classic	Cairns City Library	25
June	Barking Dogs by Norman Price	Maggie Sheppard	Queensland Contemporary	Cairns Civic Theatre	25
July	Cleansed by Sara Kane	Suellen Maunder	Contemporary English	Cairns Regional Gallery	20
August	A Doll House by Henrik Ibsen	Susan Prince	Classic	Cairns Regional Gallery	40
September	Myth Propaganda and Disaster in Nazi Germany and Contemporary America by Stephen Sewell	Suellen Maunder	Contemporary Australian	Cairns City Library	25
October	The Shape of Things by Neil La Bute	Michael Beresford	Contemporary American	Cairns Civic Theatre	25
November	Fred by Beatrix Christian	Suellen Maunder	Contemporary Australian	Cairns Civic Theatre	35

SUPPORTERS

On behalf of JUTE I would like to thank all those who have given their time, energy, knowledge and guidance to the Company. Now in its ninth year of operation, JUTE is growing stronger every year, making its mark on the landscape of Australian Theatre. Without the generous support of numerous individuals and organisations, JUTE would not have the ability to move forward as it has. I trust that you can be proud of the Theatre Company that you have helped to create.

Partners

Queensland Theatre Company - Regional Partnerships Program
Playlab Inc
KickArts

Collaborators

Cairns Civic Theatre
Cairns Regional Gallery
Cairns City Library
Knock-Em-Down Theatre (KEDT), Darwin
La Boite Theatre
Magdalena Festival
Festival Cairns

Sponsors

